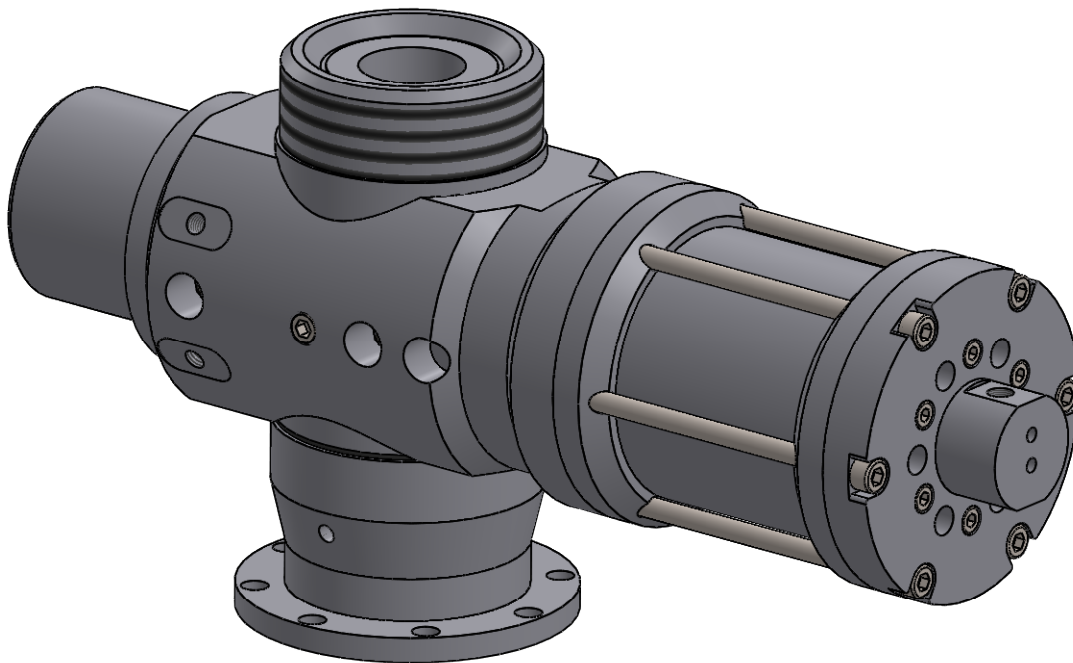


Hydraulic Blowdown

FLOTEC



Contents

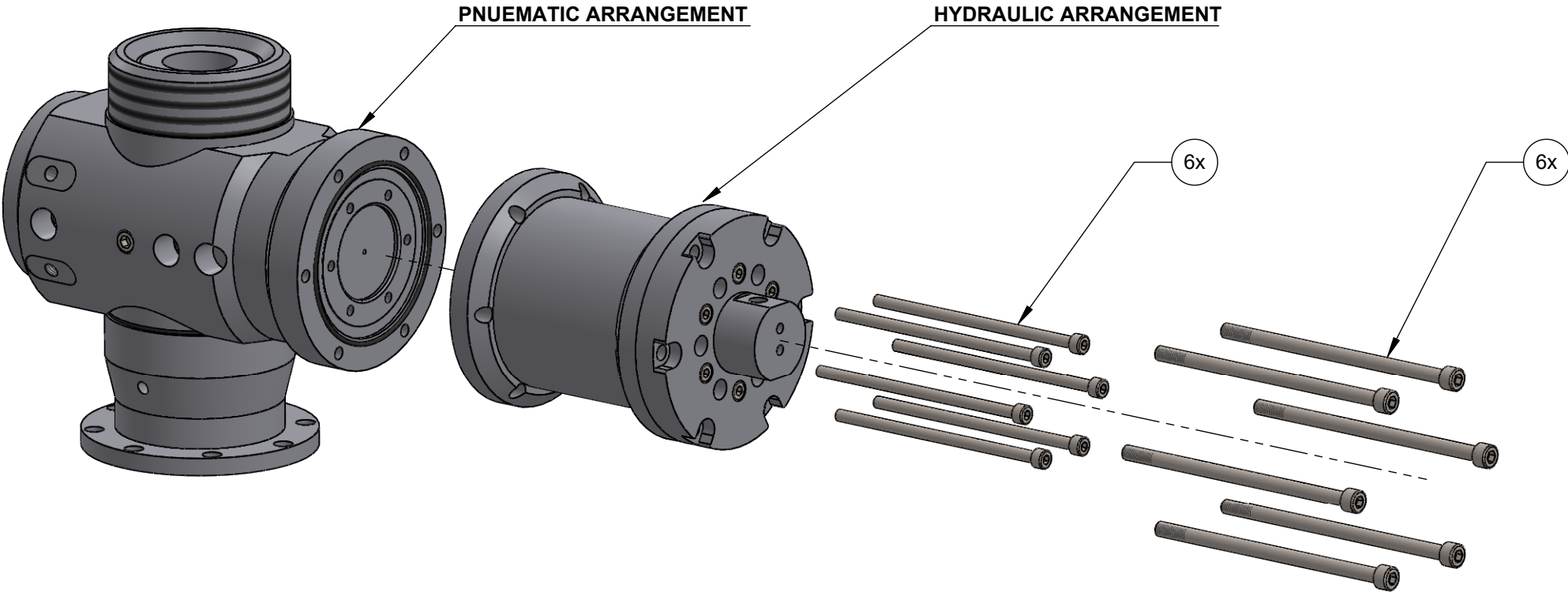
Parts List	02
Pneumatic / Hydraulic Mating	03
Overall Dimensions	04

Property of HARLSAN INDUSTRIES

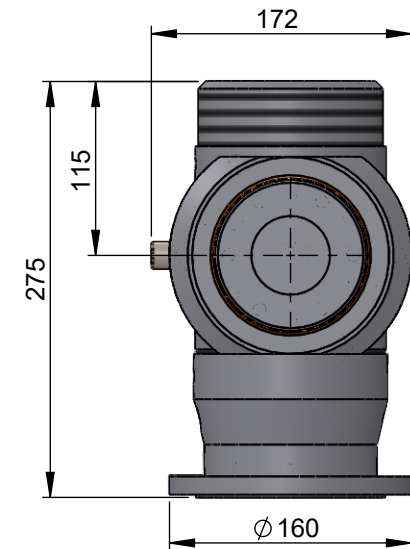
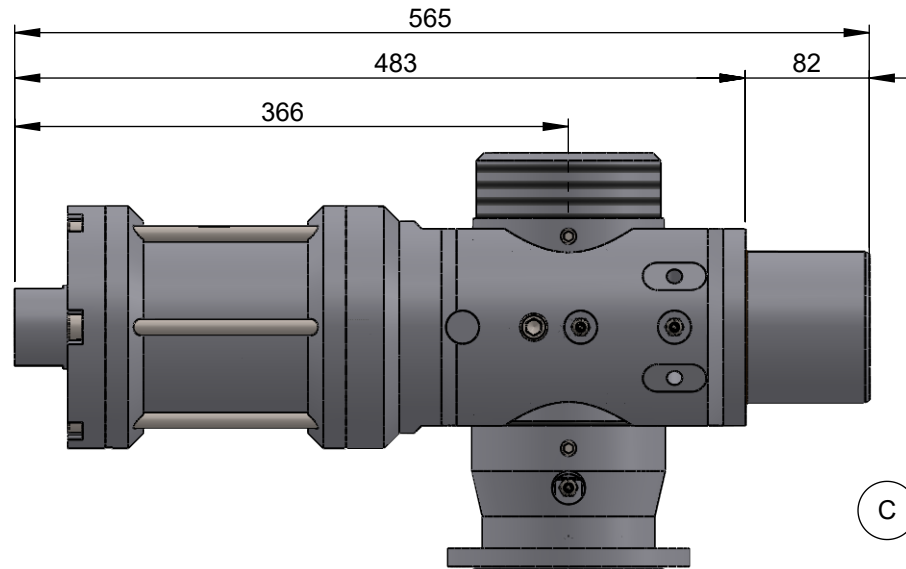
This document together with the information therein is the property of Harlsan Industries (Harlsan) and is confidential and is an unpublished work, with all rights reserved to Harlsan's. This document is subject to return on demand. It may not be copied or reproduced in whole or in part without the written express consent of Harlsan's.

It may not be used directly or indirectly or in any way detrimental to Harlsan's interests.

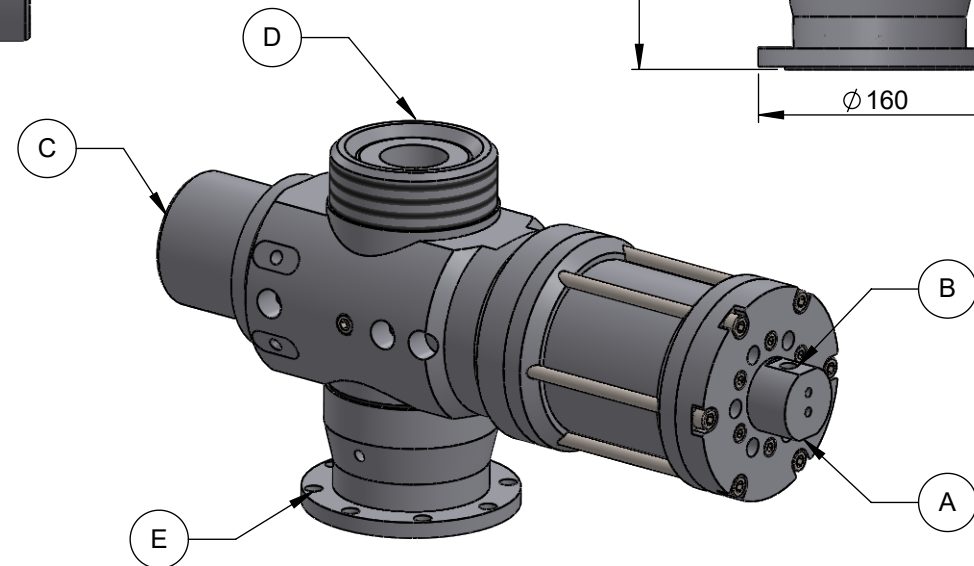
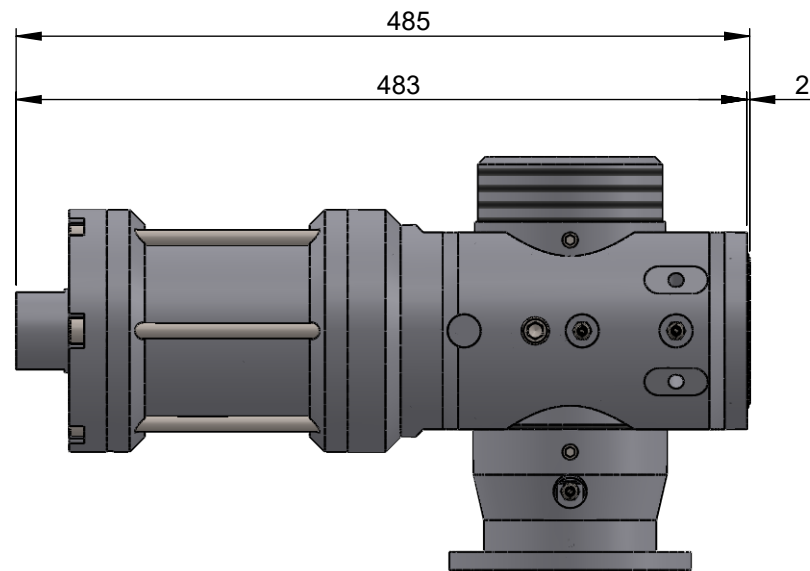
PNUEMATIC & HYDRAULIC ARRANGEMENT MATING PROCEDURE



DRILL MODE



BLOWDOWN MODE



#	Property	Value
A	Hydraulic Port - Drill Mode	1/4" BSP
B	Hydraulic Port - Blow Down Mode	1/4" BSP
C	Pneumatic Inlet	Blow Down and Blow Up/Down Models Available
D	Connection - Top Side	4.5" ACME
E	Connection - Drill Side	Flange - 8x13mm THRU @142.5PCD Kock On Nut Also Available - 6" Acme

TITLE:
Flowtec Hydraulic Blowdown
Variations Available

DRAWING NO.:

01

PAGE

03

OF

03

Property of HARLSAN INDUSTRIES
This document together with the information therein is the property of Harlsan Industries (Harlsan) and is confidential and is an unpublished work, with all rights reserved to Harlsan's. This document is subject to return on demand. It may not be copied or reproduced in whole or in part without the written express consent of Harlsan's.
It may not be used directly or indirectly or in any way detrimental to Harlsan's interests.

